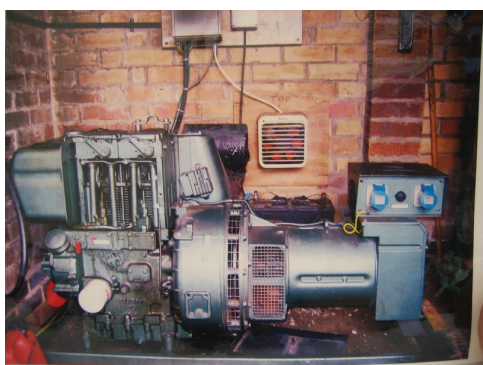


LOAN-AIDED PROJECTS

One of the benefits of membership of the Northern Association is the availability of interest free loans for capital projects undertaken by member clubs. These can be for substantial sums and are repayable over an agreed period of normally up to five years. Such is the integrity of the membership that no club benefiting from the scheme has ever failed to repay its loan, though some have needed extra time. A rare thing in this day and age, and a record to be proud of for our member clubs! Progress reports from current beneficiaries are given below, together with photographs where available.

The **Scottish Model Engineering Trust** have completed the initial phase of their ambitious project at their seven-acre woodland site near Methven in Perthshire, and they held open days in September 2008 around the time of the 7¼" gauge Society's AGM. About ¼ mile of track is completed together with station, signal box, bridge, lake, workshops, messroom and toilets. They've got off to a good start, but there is a long way to go to fulfil the potential of their seven acres!



Erewash Valley's loan was to enable them to install a generator, lacking as they do the convenience of a mains electricity supply. We understand the generator has been installed for some time and is giving good service.

Evergreens Miniature Railway, our chairman's club, is now spending their third loan from the Northern Association and their new site at Stickney, Boston, is coming along apace from little more than a loop of track a few years ago. The first two loans went towards the station and engine shed, and their third loan will help towards an additional loop inside the present main circuit following the field boundary, as well as two new passenger trucks, one being for disabled passengers.

Recent work at **Echill's Wood Railway**, now located at the Kingsbury Water Park near Tamworth, includes further work on the Picnic Green station including completion of the station roof and extension of the platform, ongoing work of track alignment and ballasting. and more work on the rather splendid tunnel portals with the help of students from Tamworth College, seen here. This will be a 'must see' track when finished



Butterley Park Miniature Railway Society needed funds to upgrade its truck shed from a dilapidated timber building to a modern secure brick construction. The picture shows the brickwork going up around the old timber hut prior to demolition of the latter, and was taken in August 2008. It will no doubt be finished by now. The club acquired the present site, their third location, in the mid eighties. It was part of the disused Britain Colliery site next door to the Midland Railway Centre. Just for interest, the second picture, kindly provided by the club, shows the extent of the ground works in the mine tailings from the old pit in 1986, soon after acquisition of the site; quite a feat of excavation .



Leyland SME's new track was officially opened in 2007 after 18 months in the making, and the final instalment of the five year loan will be paid off in September 2009. More recent developments, all funded from within the society this time, include the construction of a new truck shed ('hangar' would be a more apt description), as well as new trucks and related earthworks and track work to give access on two levels, in preparation to host the 7¼" Gauge Society AGM in September 2009. Leyland's first truck shed was a 30-foot length of 4-foot sewer pipe; the next one will probably rival Crystal Palace!



More recently, loans have been made to **Burton on Trent SME** to provide materials for a roof over the steaming bays; to **Bangor and County Down Miniature Railway Society** towards refurbishment of the toilet block and the purchase of steel for a track extension; and to **North Staffordshire SME** for an extension of the station building at Brampton Park, Newcastle under Lyme, and to provide accommodation for the storage of passenger trucks. We will post pictures of these more recent projects as they come in; club secretaries please send your pics to web editor alan_pb-atta-yahoodottycodottyuk (the thingy after alan is an underscore, ie shift-dash

This report is posted as a pdf file, so it can be downloaded and printed for posting on club notice boards if required